

Public Document Pack



AGENDA FOR

BURY EAST TOWNSHIP FORUM

Contact:: Nicole Tilly, Democratic Services Officer
Direct Line: 0161 253 5398
E-mail: n.l.tilly@bury.gov.uk
Web Site: www.bury.gov.uk

To: All Members of Bury East Township Forum

Councillors : D M Cassidy, M C Connolly, S Haroon, T Holt, K Rothwell, J Smith, S Smith, T Tariq and S Walmsley

Advisory Group Members: Tan Ahmed (ADAB), Tim Boaden (Seedfield TRA), Darren Durham (Freedom Church, Bury), Janet Edwards (Older Peoples' Forum), Harry Reed (Pimhole Residents' Association), Gemma Philburn (Streetwise 2000), Lesley Wildeman (Topping Fold TRA), Becky Mayo (young Person's Representative)

Dear Member/Colleague

Bury East Township Forum

You are invited to attend a meeting of the Bury East Township Forum which will be held as follows:-

Date:	Wednesday, 19 March 2014
Place:	New Kershaw Centre, Deal Street, Bury
Time:	7.00 pm
Briefing Facilities:	If Opposition Members and Co-opted Members require briefing on any particular item on the Agenda, the appropriate Director/Senior Officer originating the related report should be contacted.
Notes:	

AGENDA

1 APOLOGIES FOR ABSENCE

2 DECLARATIONS OF INTEREST

Members of Bury East Township Forum are asked to consider whether they have an interest in any of the matters on the Agenda and, if so, to formally declare that interest.

3 MINUTES AND MATTERS ARISING FROM THE LAST MEETING *(Pages 1 - 10)*

The minutes of the meeting held on 4 February 2014 are attached and matters arising from the meeting will follow.

4 JOINT STRATEGIC NEEDS ASSESSMENT *(Pages 11 - 30)*

A presentation will be given on the evening.

5 HEALTHIER TOGETHER - NHS BURY CLINICAL COMMISSIONING GROUP *(Pages 31 - 44)*

A presentation will be given on the evening.

6 POLICE UPDATE

7 YOUTH ENGAGEMENT FEEDBACK

The Township Co-ordinator will report on the evening.

8 PUBLIC QUESTION TIME

Questions are invited from members of the public present at the meeting on issues of concern relating to the provision of local services. Approximately 30 minutes will be set aside for Public Question Time if required.

9 ANY OTHER BUSINESS

Any other business which by reason of special circumstances, the Chair agrees may be considered as a matter of urgency.

10 TOWNSHIP PLAN UPDATE *(Pages 45 - 66)*

A copy of the Township Plan is attached for information.

11 FUNDING REPORT *(Pages 67 - 74)*

A funding report is attached for information.

12 VENUE, DATE AND TIME OF THE NEXT MEETING

The next meeting of Bury East Township Forum is to be agreed.

Minutes of:	BURY EAST TOWNSHIP FORUM
Date of Meeting:	4 February 2014
Venue:	St. Paul's CE Primary, Porritt Street, Bury
Present Councillors:	Councillors: M Connolly, S Haroon, T Holt (Chair), K Rothwell, J Smith, S Smith, T Tariq and S Walmsley
Advisory Group Representatives:	Tan Ahmed (ADAB), Janet Edwards (Older People's Forum), Gemma Philburn (Streetwise 2000), Harry Reed (Pimhole Residents' Association) and Lesley Wildeman (Topping Fold TRA)
Public attendance:	17 members of the public were in attendance
Apologies for absence:	Councillor D M Cassidy (CL) and Tim Boaden (Seedfield TRA)

Tan Ahmed (ADAB), Chair of Bury East Township Forum, gave his apologies for the start of the meeting and in his absence, Councillor Holt was nominated and appointed as Chair.

BETF.747 DECLARATIONS OF INTEREST

Councillor Rothwell declared a personal interest in item BETF.754 on the Agenda, Funding Report, relating to Bury Society for the Deaf as he is a Trustee; Bury Society for the Blind and Partially Sighted, as he is the Directorate and Trustee and First Light Film Training on the basis that two of the People involved in the Management of this Group are known personally to him.

BETF.748 MINUTES AND MATTERS ARISING FROM THE LAST MEETING

Delegated decision:

That the minutes of the meeting held on 25 November 2013, be approved as a correct record and signed by the chair.

Mr Ainsworth enquired as to minute BETF.551 in relation to Highways issues and what could be done regarding the Traffic

Bury East Township Forum 04 February 2014

Enforcement Officers being abused and unable to target certain areas.

Councillor Walmsley stated this issue had been raised in relation to Walmersley Road at the junction on Peel Way, where Officers had been verbally abused and intimidated. Previously they had been accompanied by PCSO's, however with the changes in the Police financial budgets, this was no longer possible.

Sergeant Mark Livesey reported that he would arrange a team to target this area and to work with the Traffic Enforcement Agency.

Jimmy Hill, Chair of Pimhole Residents' Association stated that he had complained on many occasions in relation to traffic issues on Heywood Street and Cooke Street but didn't feel these issues were being addressed.

Dave Thomas, the Township Co-ordinator, explained that Highways had been present at the last meeting of Bury East Township Forum to listen to the Residents' concerns and hopefully they could work with Sergeant Livesey to try and address these issues.

Lesley Wildeman (Topping Fold TRA) asked for the whereabouts of the 'no entry' sign on Yarwood Street as requested at the last meeting.

Councillor Holt reported that the sign was on order and would soon be enforced and Councillor Tariq stated that the sign was finally now in place.

Kath Bond asked that it be noted that she had requested for 20 mile speed limits to be painted on the road on Willow Street.

BETF.749 CARERS CENTRE PRESENTATION

Scott Alker, Senior Development Worker for Bury Carers Centre attended the meeting to explain to the members of Bury East Township Forum about the support the Centre offers to Carers. Scott explained that there are 7 million unpaid Carers in the UK today, saving the economy over £119 billion every year and that there are rights that they are entitled to, including:

- a life of their own outside their caring role
- an assessment of their needs
- to be able to work and their employers recognise their status as a Carer
- equal access to health and education

Bury East Township Forum 04 February 2014

- to be able to have a break from their caring role

There are 19,954 people providing unpaid care in Bury and Bury Carers Centre provides support to 2,950 registered adult Carers. The Carers Centre works in partnership with Bury Council, NHS Bury Clinical Commissioning Group (CCG) and other voluntary organisations offering support in areas including:

- To listen
- Offer 1 -1 support
- Referral for a Carers assessment
- Support groups
- Drop in facilities
- Outreach support
- Social events and activities
- Training courses and sessions
- Computer access
- Newsletters
- Access to counselling services
- Information to Carers rights and legislation
- Access to benefits advice

Bury Carers Centre is based on Silver Street and an information point in Fairfield General Hospital and the aim for the Carers of Bury is that their role as an unpaid Carer is recognised and they have access to the quality support and services they need to live their own lives and look after their own health and wellbeing.

Mr Ainsworth asked if it was a private company and Scott explained that Bury Carers Centre is part of the The Gaddum Centre and is a registered charitable Company funded by the LA and NHS.

Councillor Holt asked about the recognition from employers for Carers and Scott stated that it could depend on the business size but the legislation dictates that there has to be flexibility for Carers.

Councillor Stella Smith asked what the situation was if a Carer lived outside Bury but they cared for someone in Bury.

Scott explained that neighbouring authorities also have Carers Centres, however Bury would support a Carer under these circumstances.

Bury East Township Forum 04 February 2014

It was agreed:

That Scott Alker be thanked for his informative presentation.

BETF.750 BURY EAST ALCOHOL PROSPECTUS SCHEME – UPDATE

Project proposals were invited from organisations and needed to be focused on the Bury East area and deliver 'added value' and do not replace services that are being provided through mainstream budgets.

Lisa Harvey Nebil from the Youth Service attended the Township Forum to explain about the 'Madhouse Project', which began four years ago and is a dedicated service for Bury Children and Young People in care. The Project offers diversionary activities throughout the holiday periods providing information, advice, guidance and support for young people and to understand the consequence of alcohol and substance misuse.

Councillor Stella Smith stated it was unclear as to whether the project would be predominantly for Bury East young people. Lisa stated there was no guarantee as although the young people may start in Bury East they can move in and out of the area.

Dawn Cretney from the Youth Service attended the Township Forum to explain about the 'Seen in New Light Project', which responds to the issue of alcohol misuse and antisocial behaviour amongst residents. It will be delivered using an arts medium, engaging young residents and the wider Community within Chesham Fold Estate.

Both project proposals had been submitted to The Elected Members of Bury East Township Forum in advance of the meeting.

Delegated decision:

That following a vote from the Elected Members of Bury East Township Forum:

The request from the 'Madhouse Project' for the sum of £2,373.00 be agreed.

The request from the 'Seen in New Light Project' for the sum of £6,000 be agreed.

Bury East Township Forum 04 February 2014

BETF.751 POLICE UPDATE

Sergeant Mark Livesey and PCSO Read attended the meeting to give an update and answer questions on Police issues within Bury East, including:

- § Anti- Social Behaviour
- § Burglary
- § Burglary Other (sheds/Garages)
- § Theft from Person
- § Robbery
- § Theft From Motor Vehicle

Sergeant Livesey also explained about the Community Youth Projects within Moorside, Redvales and East Wards and current operations on going.

Various questions were asked from the members of the Township Forum including:

What recognition did the street pastors receive?

Sergeant Livesey explained that the street pastors were held in very high regard and did an excellent job of helping in Bury Town Centre and had been recognised at a Police presentation only the week before and Councillor Tariq also reported that the Council had recognised their valuable work with a Community First award.

Were the Police involved with traffic offences such as parking on double yellow lines and on pavements?

Sergeant Livesey stated that the Police do not have the resources to deal with traffic offences and that Community Safety was paramount for the Police. Councillor Holt explained that although it was frustrating, dangerous and costly for people to park on pavements, unfortunately, in reality, it was very difficult to address every issue.

It was agreed:

That Sergeant Livesey be thanked for his presentation.

Tan Ahmed (ADAB) arrived at the meeting.

Bury East Township Forum 04 February 2014

BETF.752 TOWNSHIP PLAN/YOUTH ISSUES UPDATE

The Township Co-ordinator, Dave Thomas, gave a presentation and update on Bury East Township Plan and the successes of 2013 around the following key themes:

Improved Employment Opportunities – including launching the connection provision scheme; 3 Bury East based young people having completed 6 week placements and then secured 6 month paid placements within Bury Council.

Improved Educational Attainment – including the launch of the Community Learning Partnership (CLP) with 2 Advisory Group Members being involved in the CLP meetings.

Improved Health and Wellbeing – including a successful application for Sportivate funding by Bury Council SAPAS; the launch of the 'I will if you will' initiative to engage with Bury East Communities and attract more female residents into regular physical activities.

Improved Community Safety – including establishing the Bury North Action Group – a fresh focus on Crime and Anti-Social Behaviour issues in Bury East; establishing the Bury Town Centre Partnership Action Group; the 'Be Safe Be Cool' initiative successfully delivered in local schools.

Improved Community Cohesion and Integration – including stronger links developed with local faith groups to encourage attendance at Township Forums; key faith groups represented on the Advisory Board and Youth Priorities discussion to be held at ADAB on 14 March 2014.

The Township Co-ordinator then explained about the focus for 2014 which includes a new Youth Involvement Task Group to focus on key issues for young people with initial sessions booked for 7 March 2014 at Streetwise 2000 and 14 March at ADAB;

The Township Forum to further develop links to the Backing Young Bury Scheme;

Getting more 16 – 24 year olds from Bury East into employment and spreading word of Bury East Township Forum.

Bury East Township Forum 04 February 2014

Councillor Rothwell brought to the attention of the Forum, Tony Beasley, a youth worker involved with young people in Bury East who could provide a link to the young communities.

Harry Reed asked if there was a charge for the activities in the 'I will if you will' initiative.

The Township Co-ordinator was unsure but would report back on this query.

Harry Reed stated that out of the £2 million from the Government for this initiative, £50,000 was available for Community groups to be spent within 12 months. Councillor Tariq explained that the initiative was to encourage as many people as possible and the maximum bid was £500, therefore many bids were needed in order to spend the £50,000.

Tan Ahmed stated that a lot of work had been taking place in order to secure all the successes of 2013 within different groups and organisations working together.

It was agreed:

That Dave Thomas, the Township Co-ordinator be thanked for his presentation.

BETF.753 PUBLIC QUESTION TIME

Mr Ainsworth asked if any planning application decisions and their reasons for decisions were available to the public.

Councillor Stella Smith reported that they were.

Lesley Wildeman queried an issue that she had raised to the Highways Officers at the November meeting regarding the condition of the cushions on speed bumps and the cost implications to the Council of hitting these and also the failing yellow markings on the roads, such as double yellow lines and yellow boxes in the roads. Councillor Holt stated that these issues would be raised again with Highways.

Christine Arrowsmith, a local resident, stated that she had written to the Bury Times regarding potholes in the road and that some

Bury East Township Forum 04 February 2014

holes had been filled on Inman Street but not Waterloo Court and Arden Close.

Councillor Tariq reported that the potholes in Waterloo Court and on Arden Close would be filled next month and that apparently they are to be treated with different machinery; hence they weren't filled when the holes on Inman Street were.

Tan Ahmed reported that people were driving over a grass verge on Brookshaw Street and Hilton Street for a short cut, where there is a children's play area. PCSO Read stated that they would investigate this issue.

Mr Ainsworth asked how the Whitefield and Unsworth Township Forum fared being held at 1.00 pm in the winter months, as oppose to 7.00 pm?

Councillor John Smith reported that there is a very good attendance at the meeting from the public and also from outside bodies reporting at the meeting.

BETF.754 ANY OTHER BUSINESS

Harry Reed brought to the attention of the Township Forum Members, 'Party in the Park' on 10 August 2014 and a rounder's tournament on 29 June 2014 both at Openshaw Park.

Mr Ainsworth pointed out that there was no chewing gum on the ground within the rock new development. Sergeant Livesey stated that this could be possibly because it was private land with separate cleaning arrangements.

Derek Burke from Bury Third Sector Development Agency attended the Forum to explain about funding opportunities for people in Bury, including:

- § 'Streets Ahead Cash 4 Graft' which is designed to release small amounts of funding (between £50 and £250) into Communities supporting groups of local people and neighbours who want to run local projects for the wider Community benefit and is available only to residents in the Borough of Bury.

Bury East Township Forum 04 February 2014

- § Moorside Ward Community First which is to benefit Moorside residents, by allocating small amounts of grant to local groups who operate in Moorside Ward.
- § Healthwatch Bury, which works to help local people get the best out of their local health and social care services, which is member lead and funded by but independent from, Bury Council. There was a meeting being held on Monday 10 February 2014 in the Peel Room between 5 pm and 6 pm.

Councillor Holt stated that it was nice to see a number of young people present at the meeting and it was important to hear their feedback on how the Township Forum meetings are held.

Neville McWilliams, Treasurer of Openshaw Park Veterans' Bowling Club, explained to the Forum that double glazing had now been completed at the Club which was appreciated with a view to further work being completed in the future.

BETF.755 FUNDING REPORT

A community Funding Report for Bury East had been circulated to members prior to the meeting for information. Councillor Tariq stated that there was still an amount of Ward Funding still available for this year, £1,400 for East ward, £1,525 for Moorside and £1,275 for Redvales and stressed it was necessary to get any bids in from constituted organisations as soon as possible as the money was only available until the end of March. Also, there was still a small amount of cross ward funding left.

BETF.756 VENUE, DATE AND TIME OF NEXT MEETING

The next meeting of Bury East Township Forum will be held on Wednesday 19 March 2014 at 7.00 pm, at the New Kershaw Centre, Deal Street, Bury.

COUNCILLOR HOLT (Chair)

Note: the meeting started at 7.00 pm and finished at 8.50 pm

This page is intentionally left blank

Joint Strategic Needs Assessment

Lesley Jones
Director of Public Health

Introduction

- Under the Health and Social Care Act 2012, Health and Wellbeing Boards have to produce a Joint Strategic Needs Assessment (JSNA)
- The JSNA is an assessment of local health and social care needs both now and in the future.
- The JSNA should be used to inform and guide commissioning of health, well-being and social care services within local authority areas.
- The JSNA underpins Bury's Health and Wellbeing Strategy, also a statutory requirement of the Health and Wellbeing Board.
- Bury's last JSNA was produced in 2010 – this latest JSNA is a refresh of the 2010 version.

Objectives of the JSNA

- To describe the analyses of data to show the health and wellbeing status of local communities
- To define where inequalities exist – geographical and communities of interest
- To highlight key findings based on the information and evidence collected
- To identify changes that have occurred and what these changes mean for Bury
- To identify areas for further analysis and exploration

Inequalities in deprivation

Ward	Number of LSOAs	Min	Max	Average	Range
East	7	25.2	57.3	40.0	32.1
Moorside	7	25.7	68.5	39.5	42.8
Radcliffe West	7	18.9	45.5	32.3	26.6
Besses	6	12.6	55.3	30.9	42.7
Redvales	7	16.3	41.5	29.0	25.2
Radcliffe East	7	21.7	40.3	28.1	18.6
St. Mary's	7	8.3	44.9	23.6	36.6
Radcliffe North	8	8.4	57.7	20.6	49.3
Holyrood	7	9.5	36.9	19.9	27.4
Sedgley	8	12.7	31.1	18.8	18.4
Unsworth	7	6.9	51.0	18.4	44.1
Elton	7	8.7	31.2	16.8	22.8
Church	7	7.2	33.6	14.3	26.4
Pilkington Park	7	6.6	24.5	12.6	17.9
Ramsbottom	8	4.3	25.7	12.5	21.4
Tottington	7	7.3	15.4	11.9	8.1
North Manor	6	2.2	17.4	9.8	15.2

A Lifecourse Approach

- Pregnancy and Early Years
- Children and Young People
- Lifestyle and the Living Environment
- Work and Welfare
- Vulnerability
- Ill Health and Mortality

Pregnancy and Early Years

- Infant Mortality
- Low Birth weight

- Early Access to Maternity Care
- Breastfeeding
- Smoking in Pregnancy



Inequalities

Ward	IDACI (average)	% Low Birth Weight	% Breastfeeding
Moorside	0.34	6.5	51.6
East	0.29	6.8	54.4
Besses	0.28	6.3	41.6
Radcliffe West	0.27	6.5	51.5
Redvales	0.23	7.4	61.5
Radcliffe East	0.22	7.6	48.1
Radcliffe North	0.18	7.2	42.3
Holyrood	0.16	4.5	43.3
St. Mary's	0.16	8.5	45.0
Sedgley	0.16	4.7	63.7
Elton	0.14	5.5	58.3
Unsworth	0.12	6.1	49.0
Pilkington Park	0.10	5.3	53.8
Ramsbottom	0.09	6.6	42.9
Church	0.08	4.8	53.8
Tottington	0.06	5.5	44.0
North Manor	0.06	3.1	58.8

Children and Young People

- GCSE attainment
- Absence/Exclusion
- Physical Exercise
- Outcomes for Looked After Children
- Dental Care
- KS2 and Early Years Foundation Stage
- Teenage Conceptions
- Obesity



Inequalities

Ward	CYP (average)	Teenage Conception Rate	% Obesity
Moorside	32.83	56.0	11.4
East	31.65	68.0	16.3
Radcliffe East	27.52	71.0	16.3
Radcliffe West	27.36	59.0	23.1
Besses	26.75	39.0	18.0
Redvales	19.35	30.0	14.1
St. Mary's	14.02	28.0	10.0
Elton	13.19	64.0	13.5
Radcliffe North	11.94	38.0	12.9
Unsworth	11.19	24.0	14.1
Sedgley	9.76	29.0	17.3
Holyrood	9.53	29.0	11.3
Ramsbottom	8.11	23.0	13.6
Church	7.57	15.0	13.0
Pilkington Park	6.19	15.0	9.5
North Manor	5.77	13.0	7.3
Tottington	3.71	13.0	10.8

Lifestyle & the Living Environment

- Physical Activity
- Smoking
- Emergency Asthma Admissions



Inequalities

Ward	IMD (average)	% Smoking	% Obesity	Alcohol Admissions Rate	Outdoors (average)
East	40.01	26.3	21.4	30.1	40.46
Moorside	39.45	16.6	23.3	32.0	27.47
Radcliffe West	32.32	26.1	28.2	22.1	22.95
Besses	30.88	18.8	23.4	27.8	42.05
Redvales	29.01	17.3	23.1	23.8	26.65
Radcliffe East	28.06	23.9	23.1	26.8	18.41
St. Mary's	23.62	19.6	18.9	23.6	19.48
Radcliffe North	20.62	16.4	17.5	22.5	15.18
Holyrood	19.86	21.6	17.4	18.7	36.27
Sedgley	18.75	15.6	26.2	12.6	23.24
Unsworth	18.44	14.9	18.2	27.3	22.25
Elton	16.83	15.5	16.1	21.6	16.98
Church	14.31	15.2	17.8	23.6	23.81
Pilkington Park	12.63	17.9	18.4	19.9	40.69
Ramsbottom	12.52	18.2	17.3	18.6	23.90
Tottington	11.86	15.4	17.5	21.2	13.08
North Manor	9.97	12.1	19.3	21.2	15.25

Work and Welfare

1 Educational Attainment

1 Unemployment and
benefits



Inequalities

Ward	Employment (average)	Income (average)	Job Seekers' Allowance (Number of Claimants)
Moorside	0.20	0.28	500
East	0.18	0.27	465
Redvales	0.15	0.21	345
Radcliffe West	0.15	0.20	420
Besses	0.15	0.22	350
St. Mary's	0.14	0.15	260
Radcliffe East	0.14	0.17	350
Radcliffe North	0.12	0.14	275
Unsworth	0.11	0.12	190
Holyrood	0.11	0.12	290
Sedgley	0.10	0.14	255
Elton	0.09	0.11	220
Church	0.09	0.09	160
Tottington	0.08	0.07	150
Ramsbottom	0.07	0.08	185
North Manor	0.07	0.06	95
Pilkington Park	0.07	0.08	160

Vulnerability

- Quality of Life/Social Care Indicators
- Admissions for Hip/Knee Replacement
- Fuel Poverty

- Health checks re Learning Disabilities
- Admissions for Proximal Femur Injuries
- Family Homelessness



Inequalities

Ward	Wider Barriers (average)	IDAOPi (average)	Fear of Crime %	Fuel Poverty (% average)
East	14.86	0.37	78.0	19.1
Moorside	13.13	0.34	68.8	18.5
Radcliffe West	11.85	0.26	75.5	16.7
Radcliffe East	11.70	0.24	81.8	14.5
Redvales	11.56	0.28	76.1	17.5
Besses	10.15	0.24	74.2	15.3
Sedgley	9.56	0.22	98.0	19.9
St. Mary's	9.36	0.22	77.4	16.2
Holyrood	9.06	0.16	66.3	17.5
Elton	8.24	0.16	82.7	15.4
Tottington	7.25	0.14	77.9	14.7
Ramsbottom	7.00	0.14	80.2	15.7
Radcliffe North	6.86	0.18	92.0	14.2
Unsworth	6.52	0.18	78.6	14.8
Church	6.42	0.13	94.1	15.9
Pilkington Park	4.88	0.13	80.0	17.5
North Manor	2.24	0.09	95.9	15.8

Ill Health & Mortality

- Breast Screening
- Cervical Screening

- Prevalence of Cancers
- Mortality Rates



Inequalities

Ward	IMD (average)	Health (average)	Male Life Expectancy	Female Life Expectancy
East	40.01	1.05	75.4	77.4
Moorside	39.45	1.18	75.7	78.1
Radcliffe West	32.32	0.87	75.7	80.2
Besses	30.88	0.72	78.4	82.6
Redvales	29.01	0.82	75.6	80.7
Radcliffe East	28.06	0.80	76.9	79.7
St. Mary's	23.62	0.64	75.3	80.5
Radcliffe North	20.62	0.48	76.6	81.3
Holyrood	19.86	0.36	81.1	86.8
Sedgley	18.75	0.38	81.6	88.7
Unsworth	18.44	0.47	80.6	83.8
Elton	16.83	0.29	78.3	84.1
Church	14.31	0.20	80.5	81.5
Pilkington Park	12.63	0.12	82.0	82.3
Ramsbottom	12.52	-0.02	81.6	83.6
Tottington	11.86	0.11	79.6	80.8
North Manor	9.97	0.09	81.9	84.7

Emerging Priorities

- Alcohol related health problems
- Promoting independence for older people wherever possible
- Reducing levels of smoking
- Promoting physical activity
- Better understanding the needs of vulnerable people
- Childhood and adult obesity
- Address causes of health inequalities
- Cancer and circulatory diseases
- Anticipating rising demand and need
- Focus on people in our most deprived communities
- Focus on mental and emotional health

The Consultation

- Runs from 18 Feb-31 March 2014
- Its asks:
 - Are these the right priorities?
 - Are there other issues that would benefit from further exploration and why these are important?
- Respond via Bury Council website at www.bury.gov.uk or via leaflet
- Consultation report
- HWB Board will consider findings and implications for the Health and Wellbeing Strategy and relevant commissioning plans.

This page is intentionally left blank



Bury Clinical Commissioning Group

Your health, your care, your say

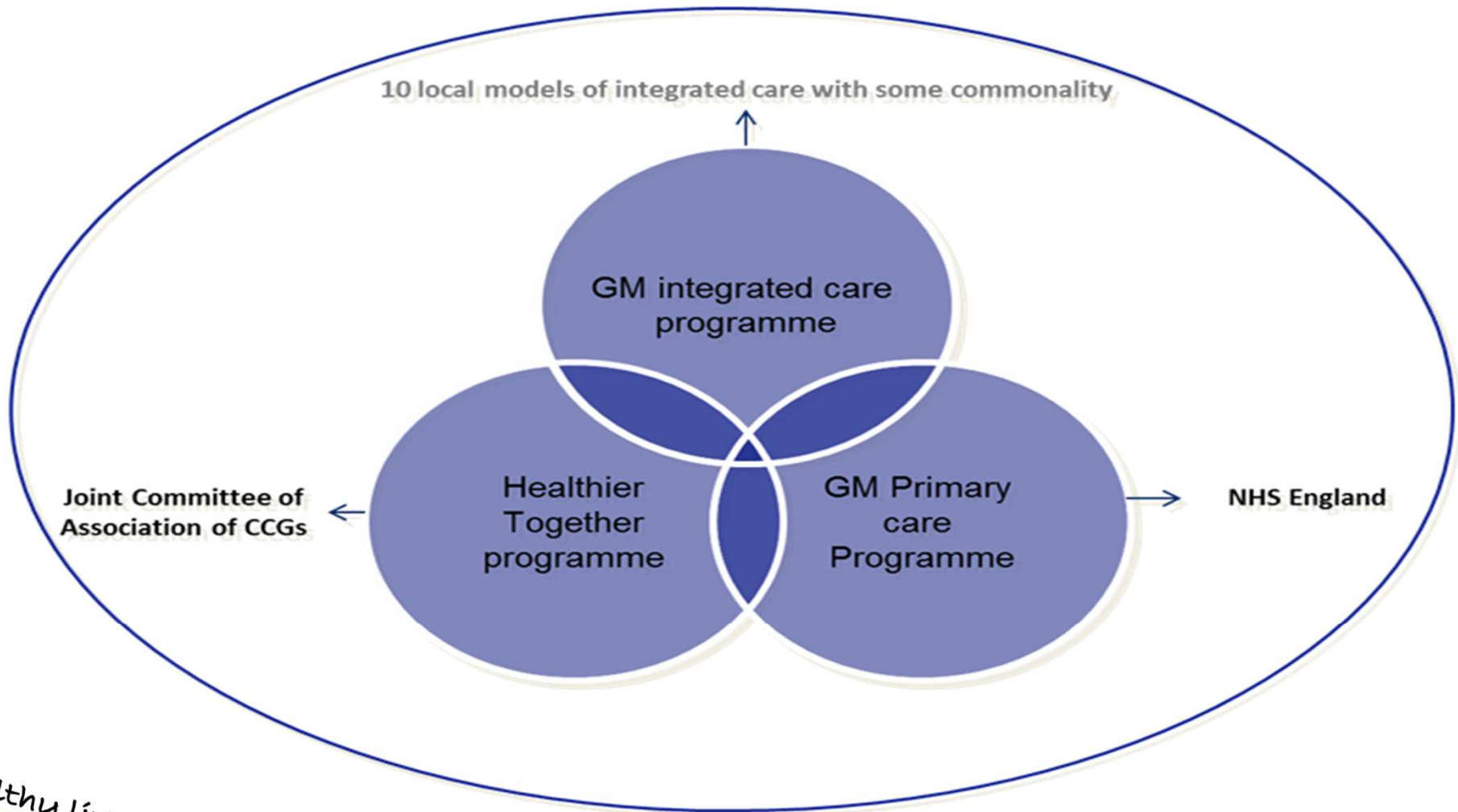
Transforming health and care services in Bury

Healthy lives strong communities

About Bury CCG

- CCGs put clinicians such as doctors and nurses in charge of making decisions about local health services
- Made up of the 33 GP Practices in the town
- We have a budget to plan and purchase a range of health services

Healthier Together – what is it?



Healthy lives strong communities

The In-Hospital reconfiguration programme is...

...a clinically led programme of work to develop safer, higher quality hospital services, including:

- Urgent, Acute and Emergency Medicine
- General Surgery, and
- Women's and Children's services

Why do we need to make these changes?

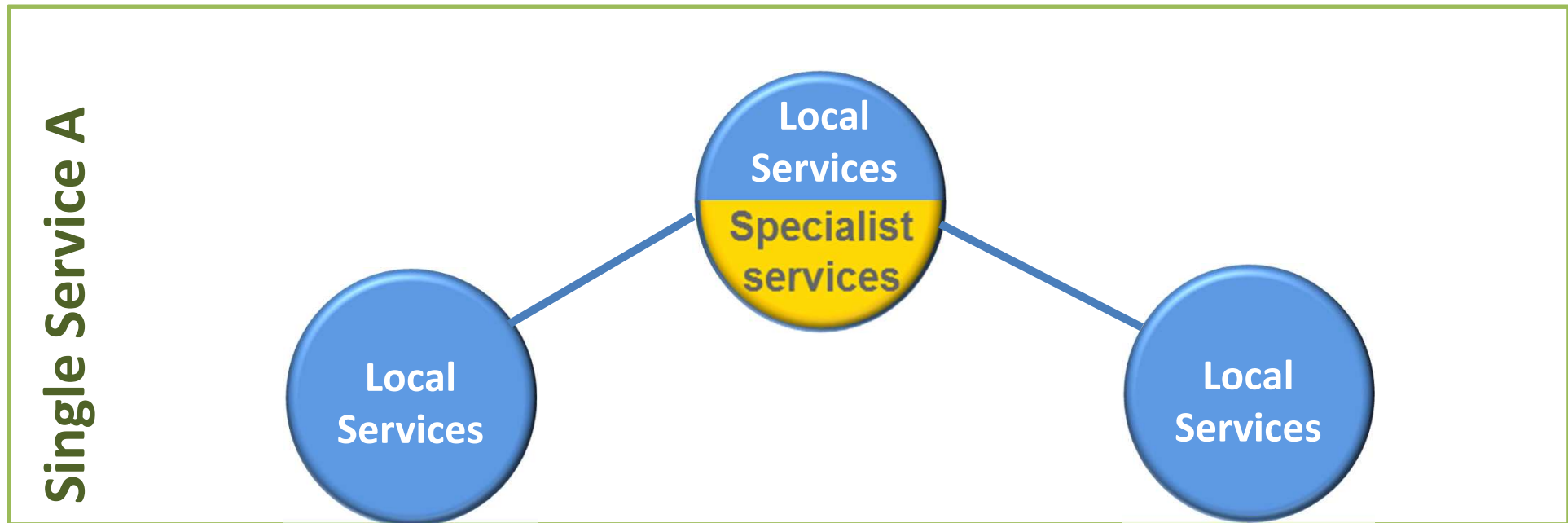
- More demand
- Greater expectation
- Variable quality and outcomes
- Fragmentation of services
- Staffing issues
- Resource limitation – equipment and premises
- Financial

The future vision

- There will be local services and specialist services
- Health services will work in a seamless way (GPs, hospital doctors, community services and social care) with patients at the centre
- Expertise will be pooled to develop centres of excellence to improve outcomes and patient experience

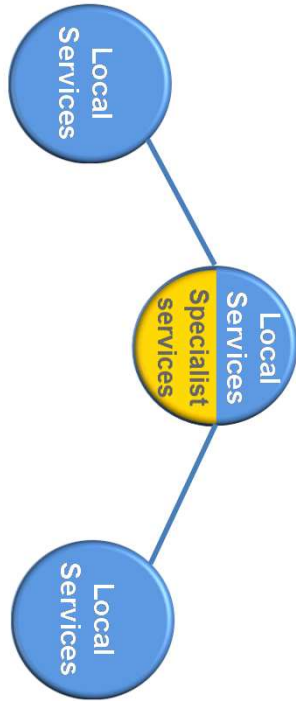
Future Model of Care - Single Services

Create Single Services – multi-disciplinary teams responsible for Specialist and Local Services for a population of GM



Future Model of Care - Single Services

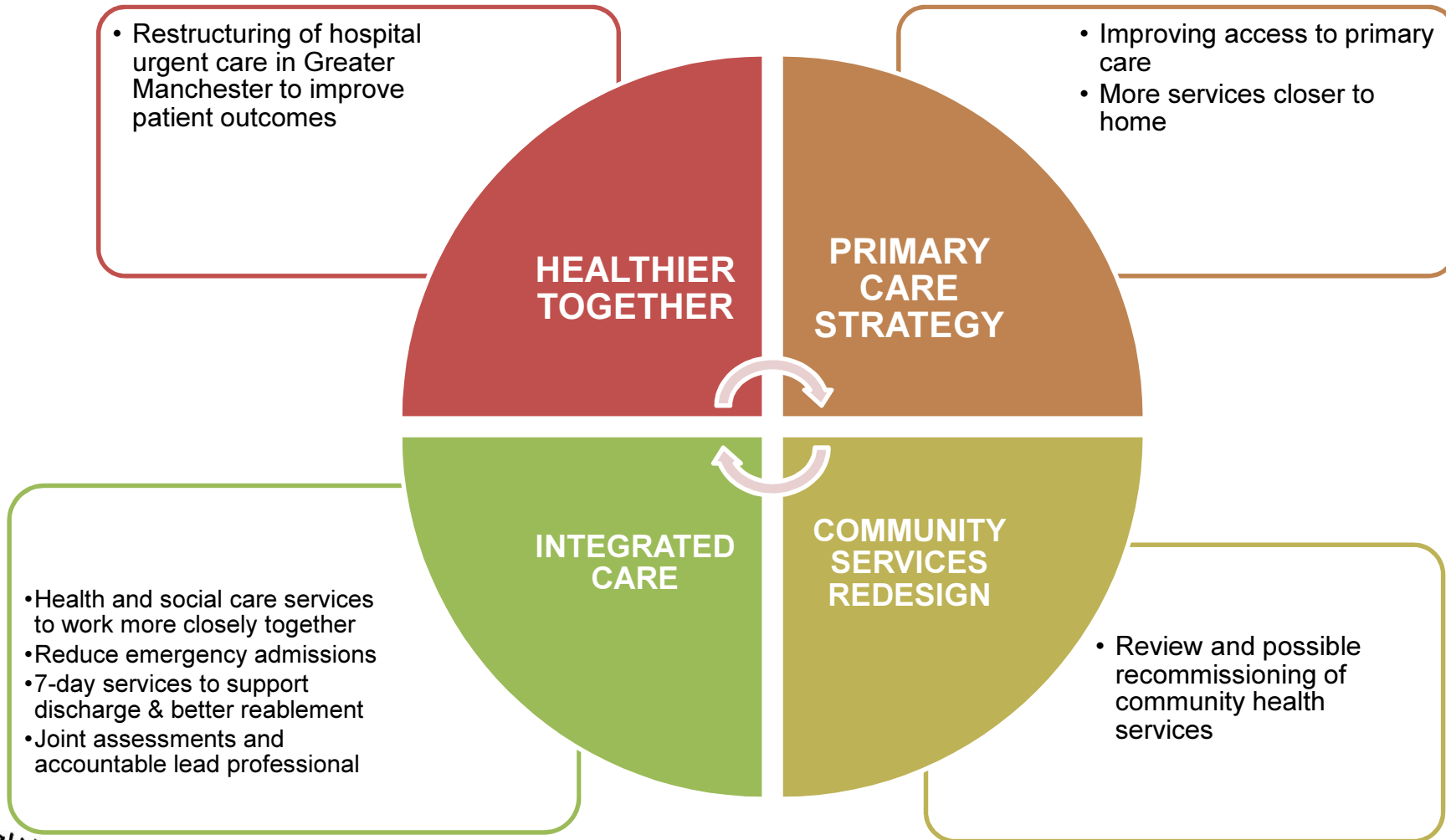
Single Service A



What is a Single Service?

- One team of staff working across the sites in the Single Service
- One performance framework
- One clinical governance structure
- One training programme

High level changes at a glance



Healthy lives strong communities

How we can achieve this

Our two year operating and five year strategic plans encompass a vision for...

Integrating health and social care

- A single, seamless service with patients at the centre
- Less emergency hospital admissions
- Supporting people to stay well at home
- Improved outcomes, more sustainable and better value of public money

Transforming hospital care / care closer to home

- Local services and specialist services - the right care, in the right place, at the right time
- Improved access / waiting times reduced
- Pooled expertise, centres of excellence, improving outcomes for patients

How we can achieve this continued...

Optimising community services

- Community Services are key to delivering integrated health and social care
- Review and possible re-commissioning of existing services to meet local needs

Enhanced primary (GP) care services

- Improved access, 7 day services
- Reduce the need for patients to be admitted to hospital
- More focus on prevention and supporting people to remain independent
- Improved access and integration with other services
 - Healthier Radcliffe

Conversation

- We've have listened to local views before
- We have had feedback
- This has informed the vision developed so far
- Now we want to test the vision so far and address any more concerns and make more adjustments



Thank you for listening and providing
your feedback

More information at...

www.buryccg.nhs.uk

www.healthiertogethergm.co.uk

This page is intentionally left blank

Bury East Township Forum

**Our Township Plan:
2012-15
(2013 Update)**

Section	Page	What it contains?
Welcome	3	A foreword from the Chair of Bury East Township Forum
About our Township Forum	4	Bury East Township Forum – who we are and what we do
About Bury East	5	A profile of Bury East and our local issues
Our vision	6-7	Details about our priorities for Bury East and our approach to partnership working
Everybody's Involved	8	A summary of how we have identified our priority outcomes
Action Plan 2013-14	9-20	Details of the new and ongoing priorities and projects we will focus our work on in 2013-14
Contact Details	21	Contact details if you wish to offer feedback on the plans



Welcome to Bury East Township Plan

Thank you for taking the time to read the Bury East Township Plan. This document provides details on how we plan to tackle some of the local issues we face as a community.

Over the past months we have held round table discussions at Township Forum meetings where Councillors, Community representatives and other members of the public were present and able to give us their views and share ideas. From this and other statistical information, we have been able to identify our priority areas for the next three years.

This plan outlines how we will continue to make progress towards the vision for our Township to promote better outcomes for the social, health, economic, and environmental well being of people within our community.

Despite the challenging economic climate we continue to strive for improvement, working together with our communities and partner agencies such as the Council, Police and Fire service, health services, faith groups and so on. We have a strong, dedicated, skilled and committed partnership that is working on a range of projects to help us deliver our priorities and improve the quality of life for residents in our community.

Bury Council has a number of key outcomes that underpin its work; delivery of this plan will support these outcomes.

- Reducing poverty and its effects
- Supporting our most vulnerable residents
- Making Bury a better place to live
- One Council, One success together

We would like to thank all our partners and residents for their continued efforts in supporting the Township Forum and the important work it does for the community of Bury East.

Tan Ahmed
Chair,
Bury East
Township Forum

Who we are and what we do

Bury East Township Forum welcomes those who live, work, or have an interest in the area. The Forum meets at local venues such as community centres and schools. These meetings are public meetings and we strongly encourage everyone to come along. Discussions are fed back to Bury Council and its partners for appropriate action.

Bury East Township Forum is a constituted council committee consisting of all the elected members representing our area and a co-opted advisory group of local representatives from the business community, voluntary organisations and community groups. There are up to nine members on each Advisory Group and a place is also reserved for a young person's representative.

The forum empowers our communities, promotes the debate of local issues and brings decision making closer to our residents. It seeks to harness the many strengths and assets we have in place here in Bury East, including local groups, strong community networks, talented young people, charities and voluntary groups, to work through these issues as a strong and committed partnership.

For further information about your Township Forum please visit [Township Forums](#) or contact David Thomas, Township Co-ordinator on 0161 253 7455, or by email at d.thomas@bury.gov.uk



Some facts about Bury East

Demography: Bury has a population of 185,100. Of these, approximately 34,047 live in Bury East. Of the population of Bury East 57.1% are Christian, 17.8% are Muslim and 17.8% have no religion or do not say what religion they are.

Deprivation: In terms of measuring deprivation, England is split into small areas called super output areas (LSOA). Each LSOA represents approximately 1500 residents. Deprivation is measured over 7 domains: income, employment, health, disability, education and training, barriers to housing and services, living environment and crime. In England there are 32,482 LSOAs. In the borough of Bury there are 120 LSOAs. Each LSOA is given a ranking, with 1 being most deprived.

Many areas of Bury East are consistently in the 20% most deprived super output areas in the country (52.3%). Bury East has 5 LSOA's in the top 10% of most deprived LSOA's in Bury and 4 in the top 10% of most deprived in England. Chesham Fold is in the 1% most deprived nationally.

Closing the gap: Deprivation levels are a major concern to us and recent data shows conclusively that Bury East suffers higher than average levels of health inequalities compared with the other Townships in Bury. Inequalities between our neighbourhoods mean poorer health, lower levels of education and skills, higher crime and unemployment for people living in Bury East. Our Township Plan aims to close the gap so that the lives of those in the most deprived areas are improved.

Our Assets: Bury East has much to be proud of, it is a popular place to live, it has some beautiful parks and green spaces such as Openshaw Park and active and enthusiastic Friends Groups. The area is diverse and different religions and cultures are celebrated. The area has also seen significant levels of investment in recent times, in particular around the Pimhole area.

We seek to harness the **many** strengths and assets we have in place here in Bury East, including local groups, strong community networks, talented young people, charities, voluntary groups and community buildings, so that together we can work as a strong and committed partnership.

Together we can achieve more!

Bury East Township Forum aims to promote better outcomes for the social, health, economic, and environmental well being of people within our community.

We can achieve this by working together to achieve a number of key outcomes:

Key Outcomes:

Our Plan will contribute to the following outcomes:

Improved Employment Opportunities

Key Issues identified: 1,247 JSA claimants in Bury East, accounting for 28% of the total claimants in Bury. Chesham Fold is the most deprived LSOA in the borough and is within the 0.5% most deprived in the country with 126 claimants, making up 9.82% of the total number of claimants in the borough.

16-24yr olds make up 34.4% of the 1,247 JSA claimants in Bury East

Current Position: Bury Works established in 2011

Improved Health and Wellbeing

Key Issues identified: Main issues identified focus on Alcohol misuse, in particular hospital admissions related to alcohol. Areas of concern also exist around mental health and the impact of worklessness on this issue.

Current Position: Bury East has the highest number of alcohol related hospital admissions within the borough (975). East ward has the highest proportion of ESA claimants in the borough and figures show that 43% of ESA claims are due to mental health issues.

Improved Community Safety

Key Issues identified: In Bury East significant issues exist around alcohol related anti-social behaviour (ASB), with the main concentration around the Town Centre. Perceptions of crime continue to be relatively high which indicates that more needs to be done to reassure people.

Current position: Alcohol Prospectus Fund (£1m) announced by government to tackle ASB

Bury East Township Forum aims to promote better outcomes for the social, health, economic, and environmental well being of people within our community.

We can achieve this by working together to achieve a number of key outcomes:

Improved Community Cohesion & Integration

Key Issues identified: In Bury East we have a diverse community with residents from different cultures and religions.

Current position: The Bury Council Community Cohesion Plan has now been agreed and published. We have limited representation in the Township Forum from the different faith groups in Bury East.

Educational Attainment/Learning

New for 2013/14

Making a difference

We will measure our performance as follows:

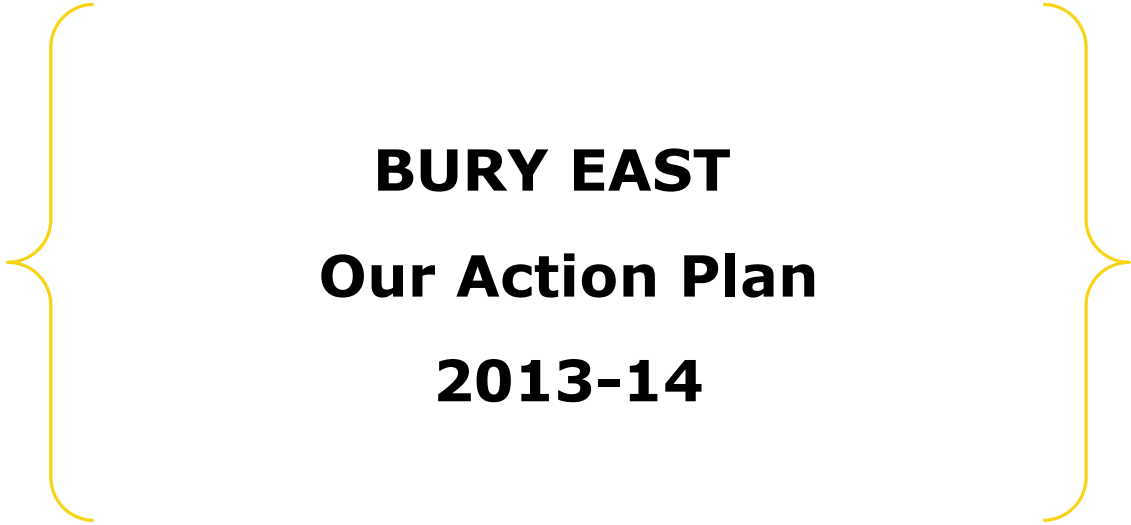
- We will monitor the action plan which will support delivery of these outcomes (an updated action plan will be shared at each Township Forum meeting)
- Bi-annual performance reports in relation to the above outcomes (presented to our Township Forum)

Everybody's Involved

Our Township Plan has been drawn together in a number of ways. We have used our knowledge of local people's priorities to focus on those issues which matter most to local people.

Key Group	How have they influenced the Township Area Plan?
Residents & Community Groups	<ul style="list-style-type: none"> • Consultation activities • Township Forums- open forum issues and round table discussions • PACT meetings
Councillors	<ul style="list-style-type: none"> • Direct involvement in the development of the objectives for this plan • Consultation activities • Township Forums
Research and Demographic Information	<ul style="list-style-type: none"> • National research and intelligence • Local Health Data • Ward profiles • Intelligence gathering
Partner Organisations	<ul style="list-style-type: none"> • Police and partner meetings • Six Town Housing (Engagement) • Council departments (Views & Input) • Primary Care Trust/ health authority • Other Partners (Views & Input)

There will be further opportunities for you to **get involved** and **have your say** on a range of issues. Your views are really important to us so make sure you take part. Please come along to our Township meetings - you will be made very welcome.



BURY EAST
Our Action Plan
2013-14

Outcome: Improved Employment Opportunities

In June 2013 there were 1,247 job seekers allowance claimants in Bury East, which is a 12% decrease since June 2012.

This figure remains 62% higher than the claimant count in June 2008.

ISSUE – What needs to be achieved	ACTIONS/OUTPUTS – How can we work towards addressing this issue?	LEAD AGENCY- Who should take responsibility?	MILESTONES	By When?
Assist those young people in Bury East who face barriers to entering into employment through Connecting Provisions Initiative	<p>Pull together existing and funded provision across the borough into one coordinated activity.</p> <p>Focused activity on those who fall under the Supporting Communities Improving Lives criteria.</p> <p>6 weeks work placements, individuals will be offered a temporary job with training and/or a guaranteed interview should internal apprenticeships arise.</p> <p>At the end of 6 months assistance will be given to move them onto an apprenticeship.</p>	<p>Economic, employment & Skills Lead</p> <p>Bury Employment & Skills Task Group</p> <p>With Support From:</p> <p>Township Co-ordinator</p>	<p>Connecting Provision interviews to take place 20th & 21st August 2013</p> <p>Township Coordinator member of nominated interview panel</p>	<p>September/October 2013</p> <p>Ongoing to 2014</p>
Increase employment availability in Bury East Township	Consultation on Bury Publication Core Strategy	Township Forum Members / Planning Officers	Consultation runs from 2 nd August – September 13 th 2013	September 2013

<p>Support actions to help get young people into work</p>	<p>Engage with local businesses to sponsor and support employment programmes such as "Backing Young Bury"</p> <p>Engage with young people in Bury East to promote any related activity</p>	<p>Economic, Employment & Skills Lead</p> <p>Bury Employment & Skills Task Group</p> <p>With Support From:</p> <p>Job centre Plus</p> <p>Township Coordinator</p>	<p>2 new Apprenticeships agreed on the Pimhole Development within Joinery and Bricklaying.</p> <p>Opportunities have been promoted in partnership with various Bury East groups including Pimhole Residents Association.</p>	<p>August 2012 Completed</p> <p>Ongoing 2013</p>
<p>Increased number of Volunteering Opportunities</p>	<p>Multi Agency Approach to increase the number and raise awareness of volunteering opportunities</p>	<p>Groundwork</p> <p>With Support From:</p> <p>B3SDA</p> <p>SAPAS</p>	<p>40 volunteering opportunities to be developed across Bury over the next 12 months.</p> <p>Final numbers for Bury East to be agreed with Groundwork.</p>	<p>End of March 2013</p> <p>November 2013</p>
<p>Get young people/people ready and into work</p>	<p>Explore possibilities for Job Fairs/ Job Clubs and ways to help prepare young people to get into work</p>	<p>Economic, employment & Skills Lead</p> <p>Bury Employment & Skills Task Group</p> <p>With Support From:</p> <p>Bury Works</p>	<p>O2 offering 6 young people 2 weeks work experience at their offices in Radcliffe.</p> <p>Agreed target of 2 people from the Bury East area</p> <p>Plan a programme of jobsfairs for 2013/14</p>	<p>August 2012</p> <p>November 2013</p>
	<p>Recruit young people Not in Education, Employment or Training (NEET) to attend Prince's Trust programme</p>	<p>Groundwork</p> <p>With Support From:</p> <p>Township Coordinator</p>	<p>Funding secured through Hopwood Hall college</p> <p>90 young people attending accredited learning</p>	<p>July 2012</p> <p>September 2012</p>

			<p>programme as a pathway to work in 2012/13 – Number for Bury East to be confirmed with Groundwork</p> <p>Township Coordinator to promote details of the scheme to Bury East Contacts</p>	<p>August 2012 Completed</p>
	<p>Funding bid in partnership with Six Town Housing & Bury Council to deliver accredited construction training for young people NEET as part of Empty Homes project</p>	<p>Groundwork With Support From: Township Coordinator</p>	<p>Estimated 20 young people NEET through Construction Skills Certificate Scheme over three years commencing 2012/13</p> <p>Approximately 5 NEETS specific to Bury East to be engaged in the scheme</p>	<p>Funding secured. Programme commences in January 2013</p>
<p>Township Forum to support a series of interventions developed by Bury Employment & Skills Task Group</p>	<p>Township Forum to have representation on Bury Employment & Skills Task Group</p>	<p>Township Coordinator</p>	<p>Agreement has been reached for Township Coordinator to attend Bury Employment & Skills Task group.</p> <p>Attend the next meeting of Bury Employment & Skills Task group 26.09.13</p>	<p>September 2012 Completed</p> <p>Ongoing 2013/14</p>

	Township Action Plan to reflect outcomes identified within Bury Employment Plan	Township Coordinator With Support From: Economic, employment & Skills Lead BEAST	Reviewed Bury Employment Plan and ensured correlation with outcomes added to Action Plan 2013-14	September 2013
--	---	--	--	----------------

Outcome: Educational Attainment / Learning (New 2013)

A particularly high proportion of the population of Bury East have no qualifications (30%), and a comparatively low proportion are qualified to degree level or above (Level 4 and above).

ISSUE – What needs to be achieved	ACTIONS/OUTPUTS – How can we work towards addressing this issue?	LEAD AGENCY- Who should take responsibility?	MILESTONES	BY WHEN?
Improve information sharing between local community and central organizations re learning needs locally	Community Learning Partnership (CLP) representative to take Bury East issues to CLP meetings	Township Forum members With Support From: Adult learning	A range of learning opportunities developed that respond to local needs and reflect the views of local people	April 2014
Mapping of current provision in Bury East	Identify gaps in learning opportunities	Adult learning With Support From: Township Forum	Increase participation in adult learning locally	April 2014
Deliver more learning opportunities in the Bury East community to make learning more accessible	Identify suitable venues for adult learning facilities Offer taster courses	Six Town Housing With Support From: Township Forum	Increase in number of learning venues in Bury East communities	April 2014
Ensure Bury East children are school ready Encourage early reading Encourage children to “think big”	Support for parents in most need - Increase family learning Embrace and celebrate gifted and talented children	Children’s Centres With Support From: Schools/ Township forums	See health and Inequalities Action plan Celebration and publicity of children’s achievements	April 2014

<p>Food sleep lifestyle and exercise all contribute to being fit and ready to learn</p>	<p>Engage women and teenage girls in sport and fitness</p>	<p>Sports Partnership Activity Alliance With Support From: Township Forum SAPAS</p>	<p>More women and girls taking part in regular physical activity</p>	<p>By 2014</p>
---	--	---	--	----------------

Outcome: Improved Health and Wellbeing

Key Issues identified: Main issues identified focus on Alcohol misuse, in particular hospital A&E admissions related to alcohol. Areas of concern also exist around mental health and the impact of worklessness.

Current Position: Bury East has the highest number of alcohol related hospital admissions within the borough (975 in 2011/12). East ward has the highest proportion of ESA claimants in the borough and figures show that 43% of ESA claims are due to mental health issues.

ISSUE – What needs to be achieved	ACTIONS/OUTPUTS – How can we work towards addressing this issue?	LEAD AGENCY- Who should take responsibility?	MILESTONES	BY WHEN?
Consistent reductions in alcohol related A&E admissions of Bury East residents	Develop a programme of sustained activity to reduce the upward trend in alcohol related A&E admissions at Fairfield Hospital	Township Forum With Support From: Series of groups through Alcohol Prospectus funding	£90k funding secured through successful Alcohol Prospectus Scheme bid Met with colleagues from Public Health to identify baseline data to assist in evidencing outcomes	May 2012 Completed July 2012 Completed
	Develop participatory budgeting model to enable the community to address issues around alcohol misuse	Township Coordinator With Support From: Township Forum Partner Agencies	Funding forms and guidance notes e-mailed to contacts & partners Participatory Budgeting event held on 4 th September	June 2013 September 2013
Lack of Physical exercise among young children to	A new initiative to encourage young residents to take up	Groundwork	Event has taken place at St Marie's Primary	Ongoing 2013-

be addressed through schools	regular exercise – Mini-Olympics initiative	With Support From: Township Forum	School including activities and games for local families	14 Completed
Up-skill families and help build confidence regarding health/medical emergencies within their community	Working directly with community groups and individuals to deliver accredited Paediatric training courses	Groundwork (Streets of Community Spirit team) With Support From: Township Forum	Programme accredited and on offer to residents in Hornby Street (3 people completed so far)	Ongoing 2013-14
A growth in participation of 14-25 year olds and across adult population	Deliver activities which engage with Bury East communities and attract more people into regular physical activity	Sports and Physical Activity Service (SAPAS) With Support From: Township Forum	Applications submitted for Sportivate funding Community Sports Activation Funding (CSAF) external funding Women and girls Activities	June 2014
Reduce fuel poverty and its affects in Bury East	Promote "ECO Toasty 2013" to enable Bury East residents to access energy efficiency measures	Awardable Warmth Team Referrals to GM energy Advice Service 0800 009 3363 or via getmetoasty@manchester.gov.uk With Support From: Township Co-ordinator RTNM Township Forum	Results at end of financial year re number of measures and savings	April 2014

Outcome: Improved Community Safety

Key Issues identified: In Bury East significant issues exist around alcohol related anti-social behaviour (ASB), with the main concentration around the Town Centre. Perceptions of crime continue to be relatively high which indicates that more needs to be done to reassure people.

Current position: 2nd year of the Bury East Alcohol Prospectus Fund (£90k) secured to address alcohol related ASB

Issue – What needs to be achieved	ACTIONS/OUTPUTS – How can we work towards addressing this issue?	LEAD AGENCY- Who should take responsibility?	MILESTONES	By when?
Reductions in Alcohol related Anti-Social Behaviour	Bury East Alcohol Prospectus Scheme (BEAPS) 2 nd year	Township co-ordinator With Support From: Township Forum Partners Bury Council	Second round of bids announced in June 2013	Ongoing for 2 year period
Community Involvement in tackling Alcohol Issues	Participatory budgeting model to be used to develop community led actions in Bury East community	Township Coordinator With Support From: Township Forum	New round of funding commenced June 2013 Deadline for bids 28 th Aug 2013 PB event Wednesday 4 th September 2013	June 2013 September 2013

Reduce negative perceptions of anti-social behaviour in Bury East	Develop regular communication of good news stories through Township Forum website and other media	Neighbourhood Policing Team With Support From: Township Coordinator Communications	Partnership Action Group outcomes promoted at Bury East Township Forum	September 2013
			Discussions needed regarding next steps in developing a communication strategy	Ongoing 2013
Improve Partnership response to community safety issues	Develop a multi-agency partnership group to address community safety issues	GMP Anti-Social Behaviour Coordinator With Support From: Township Coordinator	Bury North Partnership Action Group (BNPAG) to be established	August 2013
			Next meeting scheduled and agenda items being collected	26 th Sept 2013
			Partners to deliver on actions for September meeting	26 th Sept 2013
Identify and quickly deal with potential offenders.		GMP Anti-Social Behaviour Coordinator With Support From: Township Coordinator	List of offenders to be reviewed at next BNPAG meeting	26 th Sept 2013
Multi Agency Partnership to identify young people who are at risk of offending		GMP With Support From: Township Forum Various Partners	Partners to forward details of vulnerable young people for next meeting	Ongoing 2013/14

Outcome: Improved Community Cohesion & Integration

Key Issues identified: In Bury East we have a diverse community with residents from different cultures and religions. 57% of the population are Christian, 17.8% are Muslim and 17.8% have no religion.

Current position: The Bury Council Community Cohesion Plan is now in place. We have very limited representation in the Township Forum from the different faith groups in Bury East.

ISSUE – What needs to be achieved	ACTIONS/OUTPUTS – How can we work towards addressing this issue?	LEAD AGENCY- Who should take responsibility?	MILESTONES	By When?
Improved understanding between partner agencies and local Mosques	Discussions regarding mentoring project between young people attending Bury East Mosques and GMP/Bury Council Officers	GMP With Support From: Township Coordinator Community Cohesion Officer	Meeting between Township Coordinator and GMP representative scheduled Sept 2013	January 2014
Improved understanding between members of the community and varying faith groups	Explore the potential for a cultural awareness event for the community around Openshaw Park Develop leaflet based on the Bury Council Welcome Pack outlining community and borough wide services	Community Cohesion Officer With Support From: Township Coordinator ADAB Neighbourhood Police Team Local School Heads	Meeting with Inspector to discuss involvement of Neighbourhood Policing Team Further meeting needed with ADAB to discuss next steps	August 2012 Completed September 2012

<p>Improved attendance and involvement from BME community at Township Forums</p>	<p>Formal invitations to be developed to invite faith groups to future Township Forums</p> <p>Meet with leaders of Mosques within Bury East</p>	<p>Township Coordinator</p> <p>With Support From:</p> <p>ADAB</p> <p>Township Forum Members</p> <p>Communications Team</p>	<p>Formal invitation sent to Bury East Mosques</p> <p>Arrange suitable dates for visits with faith leaders.</p>	<p>May 2013</p> <p>October 2013</p>
<p>Promote pride and belonging within Bury East and encourage community to help shape the Bury East area</p>	<p>Develop a series of thematic groups to manage delivery of key outcomes within Township Plan</p> <p>Promote Made in Bury brand through members of Township Forum</p>	<p>Township Coordinator</p> <p>Community Cohesion Officer</p> <p>With Support From:</p> <p>Township Coordinator</p> <p>Advisory Group Members</p> <p>Councillors</p> <p>Residents</p>	<p>Initial contact has been made with partners organisations and key Advisory Group members regarding their involvement</p> <p>Meeting scheduled with Community Cohesion Officer to discuss strategy</p>	<p>October 2013</p> <p>Ongoing 2013</p>

David Thomas
Township Co-ordinator
Communities Section

Town Hall, Knowsley Street, BL9 0SW
Tel: 0161 253 7455
Mob: 07974723592
Email: d.thomas@bury.gov.uk

Title:	Community Funding Report
To:	Bury East Township Forum
Date:	19 th March 2014
Contact Officer	Liz Saunders Bury Council Programme Support Officer 0161 253 6357 e.saunders@bury.gov.uk

1.0 Introduction

The Council has allocated £1,000 per ward to support the work of voluntary and community groups. The application funding decisions will be made by the relevant ward councillors. Individual grants to the **"ward" fund** are available for a maximum of £250. Additionally, a borough-wide allocation of £13,000 is available for **"cross-ward"** applications from third sector organisations, with a maximum individual grant of £750.

2.0 Ward Funding 2013/14

East

<i>Group</i>	<i>Details</i>	<i>Allocated</i>
Pimhole Residents Association	To produce a newsletter	£ 250.00
Muslim Christian Forum	Christian Eid party	£ 250.00
Openshaw Mgmnt Bowling	prizes & refreshments	£ 250.00
Openshaw Mgmnt Bowling	To re-glaze the pavilion	£ 250.00
Fund Remaining		£900.00

Moorside

<i>Group</i>	<i>Details</i>	<i>Allocated</i>
First Light Film Training	Pay for professional training	£ 375.00
Bury FC	pitch hire	£ 250.00
Fund Remaining		£1,275.00

Redvales -

<i>Group</i>	<i>Details</i>	<i>Allocated</i>
New Springs community group	Coach trip to zoo	£ 250.00
First Light Film Training	Pay for professional training	£ 375.00
Bury FC	pitch hire	£ 250.00
Fund Remaining		£1,025.00

3.0 Cross Ward Funding 2013/14

<i>Group</i>	<i>Details</i>	<i>Allocated</i>
Eden Garden Allotment Association	To purchase a garden shed for the allotment	£ 750.00
Prestwich Carnival	To organise the carnival	£ 750.00
Bury Society for Deaf	To purchase a baby changing unit	£ 750.00
Girlguiding Whitefield and Radcliffe	To purchase a projector	£ 750.00
Redeeming Our Communities	To purchase refreshments for a course	£ 750.00
Radcliffe Traders	To organise the Radcliffe Dance off	£ 750.00
Iranian Education and Culture Group	To pay for room hire	£ 750.00
The Mosses Thursday Group	To pay for room hire	£ 750.00
Whitefield Business Group	cost towards Halloween festival	£ 750.00
Rotary Club of Ramsbottom	fund a laptop and printer	£ 750.00
Events by us	3 Day charity event at Burrs	£ 750.00
Prestwich Clough Centenary Group	Bands for Prestwich Clough	£ 750.00
Prestwich Clough Centenary Group	Marquee for Prestwich Clough	£ 750.00
Prestwich British Legion	To revamp one of the community rooms	£ 750.00
Unsworth Football club	Football Goal posts	£ 750.00
Whitehead Park Community Café	To update the Whitehead Park Pavilion	£ 750.00
25th Prestwich and Whitefield Scouts	To upgrade building security	£ 750.00
Bury Fair Trade	Bury Fair Trade Fortnight	£ 250.00
Fund Remaining		£ 0.00

4.0 Small Grants Panel 2013/14

5.0 Bury Council has an annual allocation of £84,100 plus any residual funding from the previous years Community Fund (for 2012/13 £4,646.41) for the Small Grant's Fund. The current funding priority is to encourage and support grass-root community activity. This means small, community-based and locally controlled groups that manage themselves, encourage active participation from volunteers, and have minimal cash reserves and limited access to funding support.

6.0 Application forms for the new round of funding in May are available from Liz Saunders 0161 253 6357 or e.saunders@bury.gov.uk

7.0 Small Grants Fund

Applicant		Requested	Decision
Tottington Holiday Club	To run a holiday play scheme	£ 3,000.00	£ 1,000
Chesham Fold	Running costs for the TRA	£ 5,563.52	£ -
Openshaw Park Green	For double glazing on the Pavilion	£ 4,200.00	£ 1,400
The Attic	To run 2 work programmes in The Attic	£ 9,000.00	£ -
Deaf Society	To provide a disabled toilet	£ 12,000.00	£ 4,000
Relate	To provide a bursary to subsidise those using the service	£ 12,000.00	£ 6,000
Eagles Wing	Core funding for Solidarity	£ 12,000.00	£ 6,000
Inspire 1	Midsummer Sing 2013	£ 6,075.00	£ -
Inspire 2	To fund the first year of the new Community Choir	£ 2,297.95	£ 1,800
Evolve	To fund an eco stage at the Ramsbottom Festival	£ 12,000.00	£ -
Project 29	To provide basic level training on film making	£ 12,000.00	£ -
Culture Well	To offer creative activities for health and wellbeing	£ 3,355.00	£ -
Topping Fold TRA	To organise various community trips	£ 7,604.80	£ 2,500
ADAB	To run an employment and training course	£ 11,874.48	£ 4,000
Prestwich and Whitefield Heritage	To fund the heritage museum in Prestwich library	£ 3,500.00	£ 1,000
Radcliffe Traders Group	To organise Radcliffe Dance Off	£ 1,816.90	£ 900
Rotary Club of Radcliffe	Organise the over 70's Christmas party	£ 2,000.00	£ 2,000.00
B-Muzik	Holiday teenage project to reduce ASB	£ 11,857.00	£ 5,928.50
Whitefield Business Group	Whitefield Halloween Festival	£ 10,000.00	£ -

Higher Road Allotment	Install drainage and remove trees	£ 11,500.00	£ 4,185.50
Chesham Road Community Centre	Running costs for the Centre	£ 3,000.00	£ 3,000.00
Super Mum Project	Office rental and miscellaneous items	£ 11,947.00	£ -
Diabetic Support Group	Run information sessions	£ 6,000.00	£ 3,000.00
Victoria TRA	Mortgage payments	£ 10,000.00	£ -
Outwood TRA	General equipment and insurance for the youth club	£ 3,519.00	£ 3,519.00
Chapelfield Grow Your Own	Expand the Grow Your Own initiative	£ 4,335.00	£ 4,335.00
Community Café for Bury	Restoration of Whitehead Park Pavilion	£ 12,000.00	£ -
Healthier Communities Project	Health education and promotion activities	£ 12,000.00	£ -
Local In Prestwich	Ongoing LIP promotion	£ 12,000.00	£ -
Well Arty	Website design and BIG Social event	£ 4,032.00	£ 4,032.00
Withins Community Association	To improve and maintain Withins Brook	£ 3,500.00	£ -
Summerseat Village Community	To improve and maintain Summerseat Island	£ 12,000.00	£ -
Hunters Hill TRA	To help fund a play area	£ 12,000	£ 3,354.00
Victoria TRA	Running costs	£ 8,170	£ 3,354.00
Hard of Hearing Support Group	To fund weekly meetings for hard of hearing	£ 1,298	£ 1,298.00
Radcliffe Town FC	To compete improvements to the club house	£ 1,000	£ 1,000.00
Solidarity	To continue monthly activities and social events	£ 12,000	£ 3,354.00
Azamran Youth Club	Easter and summer play schemes	£ 9,538	£ 4,769.00
Jitahidi	To develop the group with meetings and events	£ 8,103	£ 3,354.00
Five Stars Appeal	Pilot project to offer skills training to volunteers	£ 6,000	£ -
Ramsbottom Business Group	To help fund Ramsbottom Chocolate Festival	£ 7,300	£ 3,563.00
Summerseat Village Community	To improve Summerseat Island	£ 12,000	£ 6,000.00
		Total	£ 88,646.00

8.0 Community First

The fund, **Community First** aims to help groups improve their area and is intended to maximize community involvement in the process whilst expecting neighbourhood groups to match funds with either money or time. The four eligible wards (East, Moorside, Radcliffe East and Radcliffe West) have set up Panels consisting of members of the community whose principal role is to identify local priorities for funding and make recommendations relating to projects to be supported. B3SDA is the panel partner. The Panels will meet in March to allocate the final tranche of funding. Application forms are available from www.B3SDA.org.uk or can be requested from the email addresses below.

East Bury Panel - eastward.bury@yahoo.co.uk

Holly Court Social Club	Gardening Project - required storage for tools and equipment.	£250.00
B:eastie's Junior Youth Club	Breakfast Club, and variety of outdoor and indoor activities for summer holidays	£1,247.00
Eagles Wing	A package of support and practical assistance to meet some of the identified needs of local people	£2,184.00
Topping Fold Community	Gardening project - equipment required	£1,467.54
Making Space	Development of pop-up cafes	£1,714.46
Rebuild	Provide basic IT training to residents	£500.00
Bury Asian Women's Centre	Health and Wellbeing event with local volunteers	£600.00
Bury Blind Society	Befriending project	£850.00
The Met	Dance Workshops	£800.00
The Met	Recording Studio Workshops	£800.00

Beasties Youth Club		£1,100.00
Friends of Openshaw Park	Pending	£250.00
Bury FC Community Trust	Cricket	£2,350.00
		£14,113.00

Moorside Panel - moorsideward.bury@yahoo.co.uk

Seedfield Tenants and Residents Association	Setting up and running of a fortnightly luncheon club	£2,500.00
Seedfield Tenants and Residents Association	Day trip to Blackpool	£750.00
Seedfield Tenants and Residents Association	Weekly luncheon club for elderly	£1,250.00
Seedfield Tenants and Residents Association	Trip to Tattan park	£1,008.00
Friends of Chesham Woods	Promote the local nature reserve to pupils and staff	£1,275.00
Cartwheel Arts	Creative writing workshop once a month	£400.00
Chesham Fold TRA/Community Centre	Continue running of two junior clubs, and gardening for elderly	£430.00
Making Space	Development of pop-up cafes	£2,500.00
Ramsbottom Angling Association	Offer junior tuition and disabled angling provision	£2,500.00

Friends of Chesham Woods Nature Reserve	Funding for First Aid Training, insurance cover, tools, equipment and materials	£1,500.00
		£14,113.00

This page is intentionally left blank